



By IK6BAK

Fig. 13  
Varie specie di  
correnti

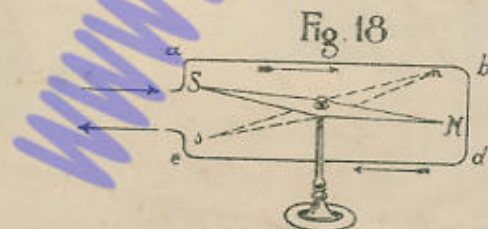
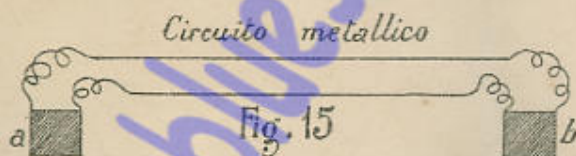
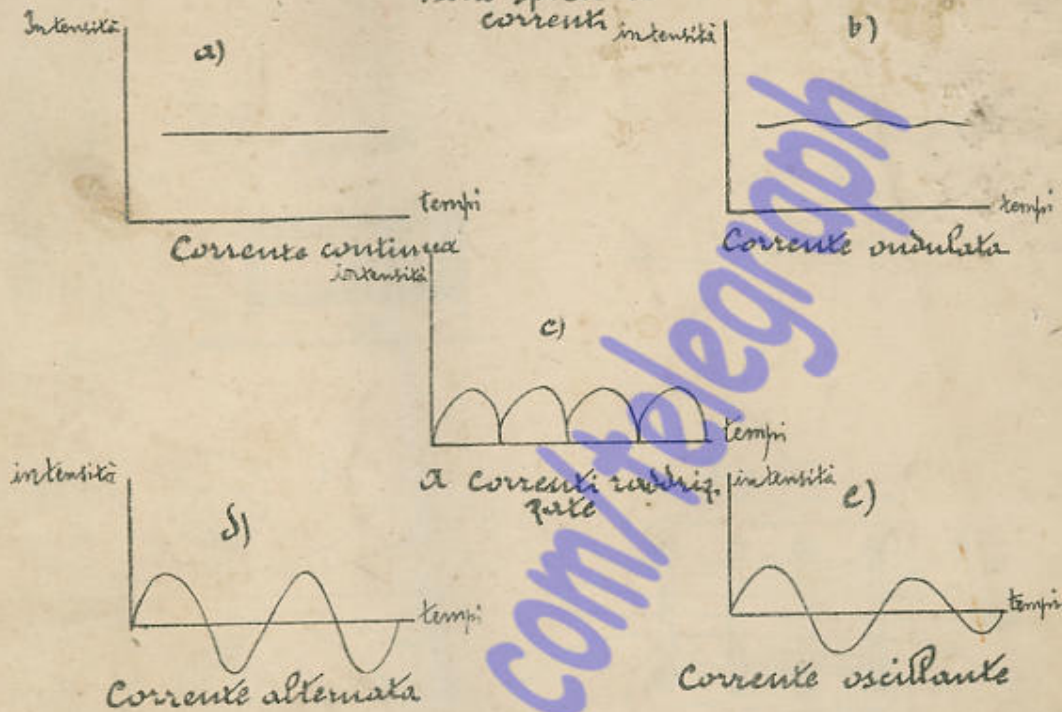


Fig. 16

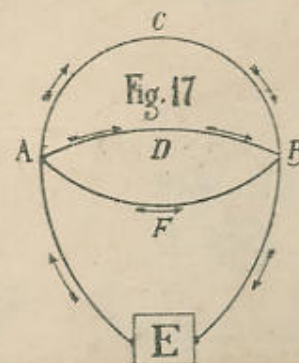
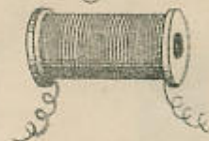
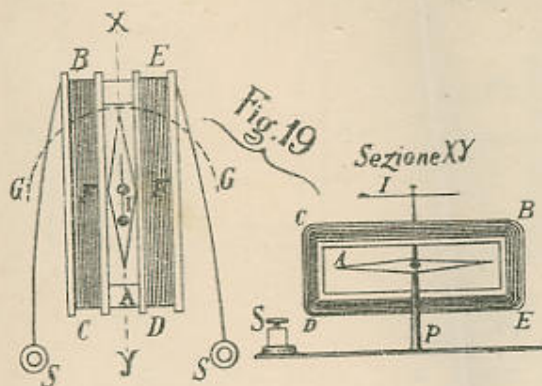
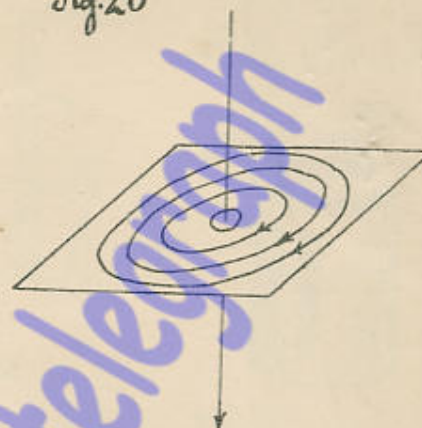


Fig. 20



Sezione XY

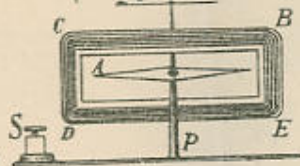


Fig. 21

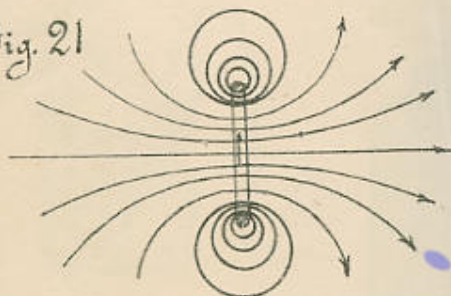


Fig. 22

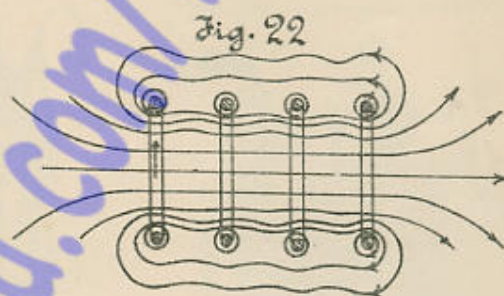


Fig. 23



Fig. 24



Fig. 25

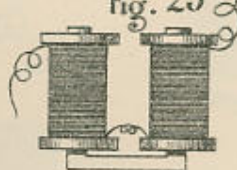


Fig. 26



Fig. 27



Fig. 28

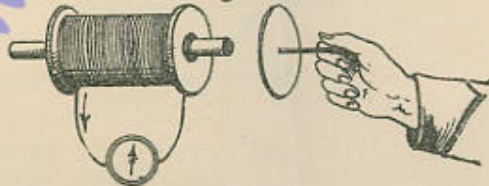
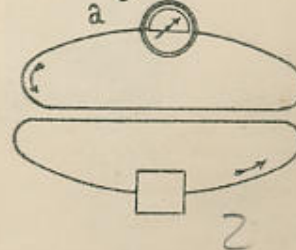


Fig. 29





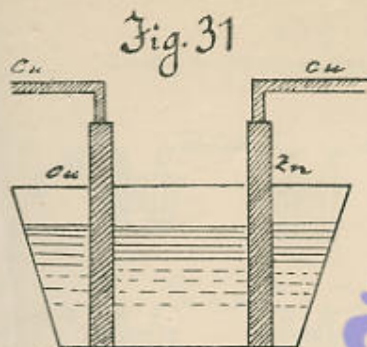
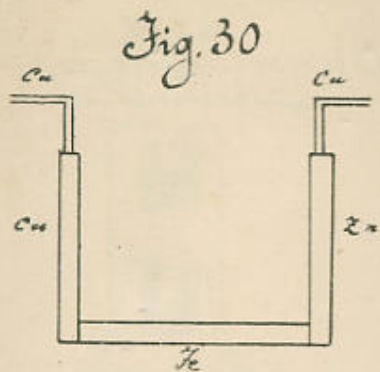


Fig. 32 Tav. IV  
Bila Daniell



Fig. 33  
Bila Italiana

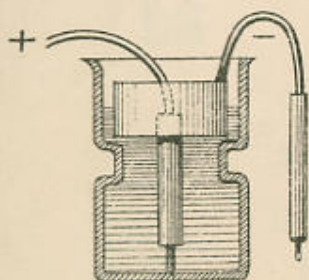


Fig. 34  
Bila Leclanché  
a vaso poroso

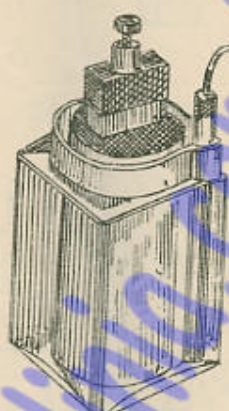


Fig. 35  
Bila Leclanché  
a  
piastre  
conglomerale

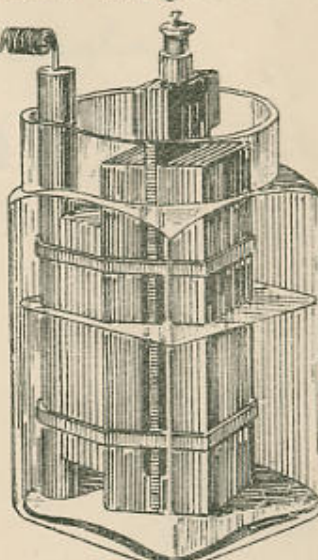


Fig. 36  
Bila Hessler

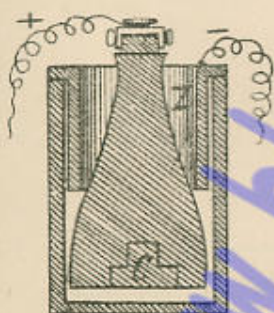


Fig. 37  
Bila Marie Davy

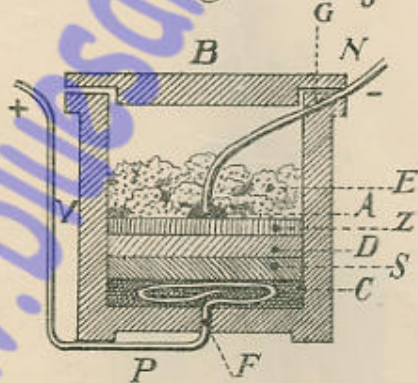


Fig. 38  
Bila a secco OG

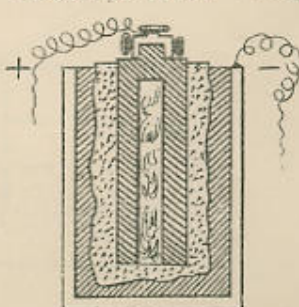


Fig. 39- Aggruppamento in serie

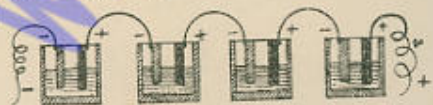


Fig. 40  
aggruppamento  
in quantità

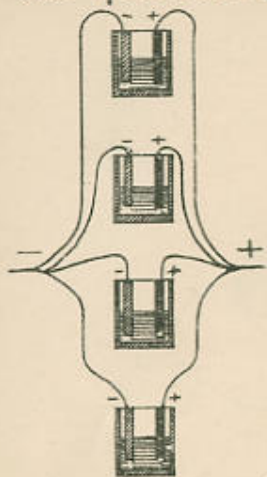


Fig. 41  
Aggruppamento misto

Tav. V.

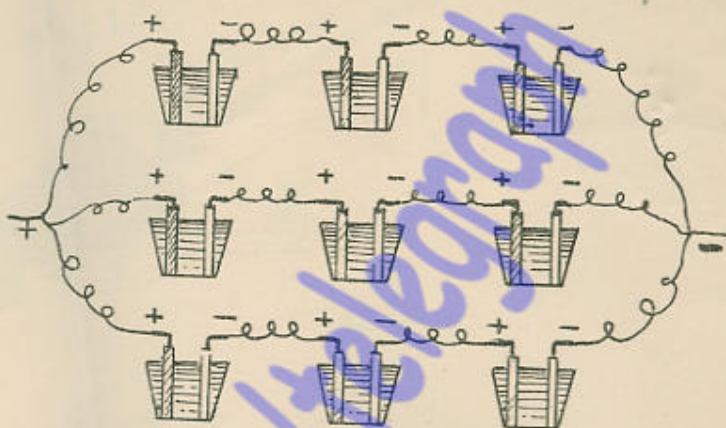


Fig. 42. Aggruppamento a scaglioni

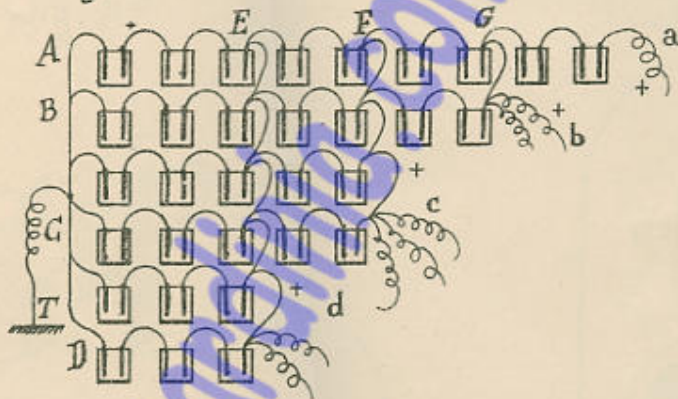
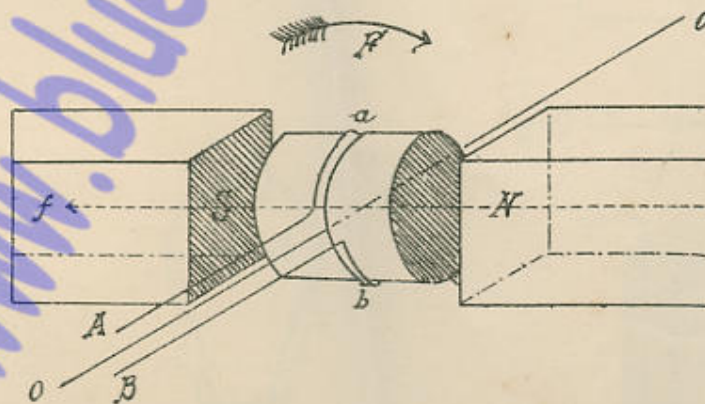


Fig. 43





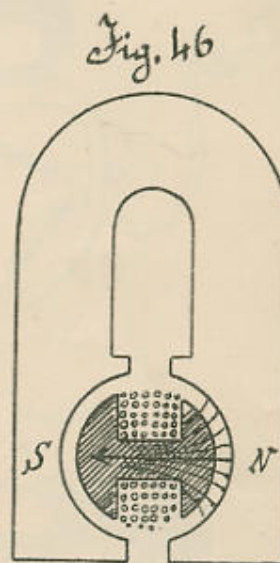
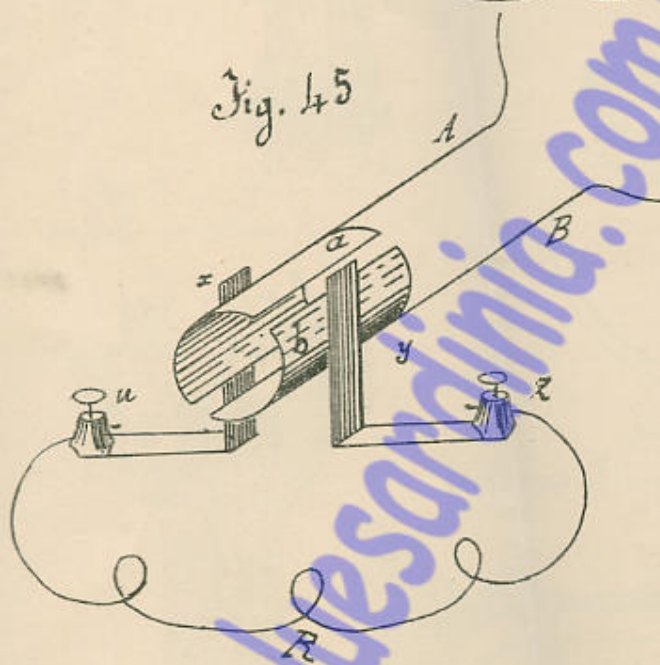
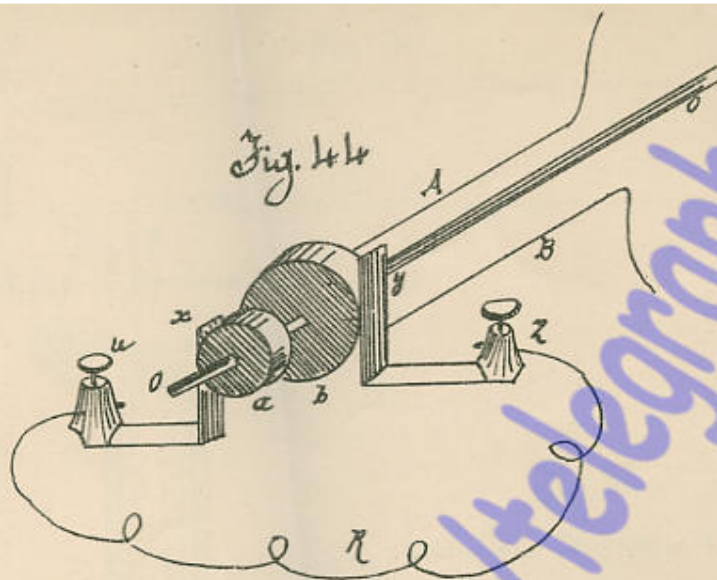


Fig. 49. Accumulatore Gandini

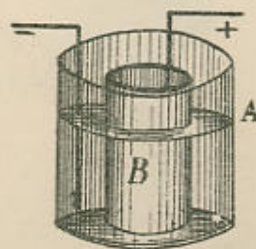
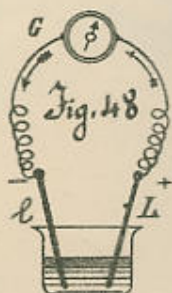


Fig. 50

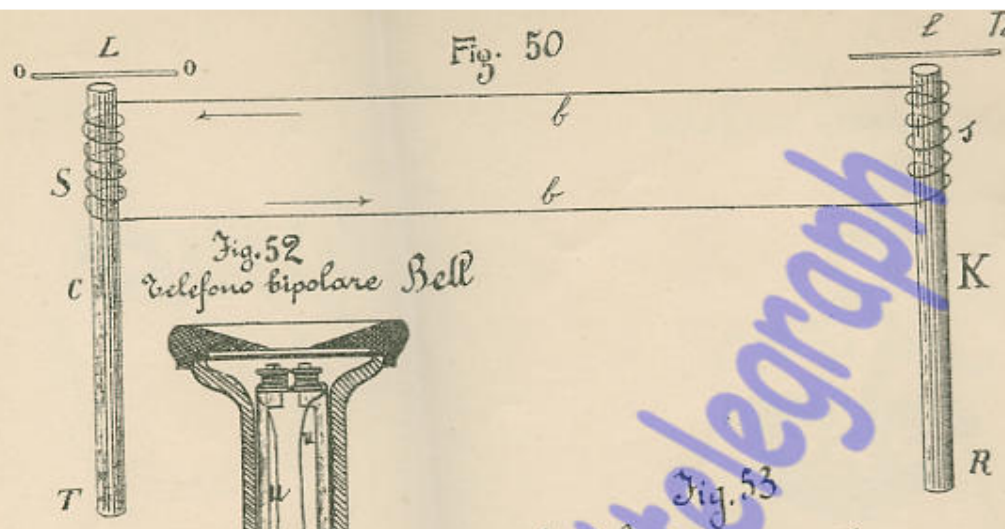


Fig. 52  
Telefono bipolare Bell



Fig. 53  
Telefono Crown a Corona

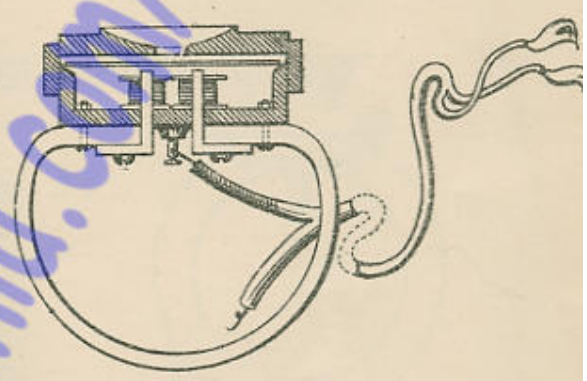


Fig. 51  
Telefono unipolare Bell



Fig. 54  
Telefono Siemens e Halske

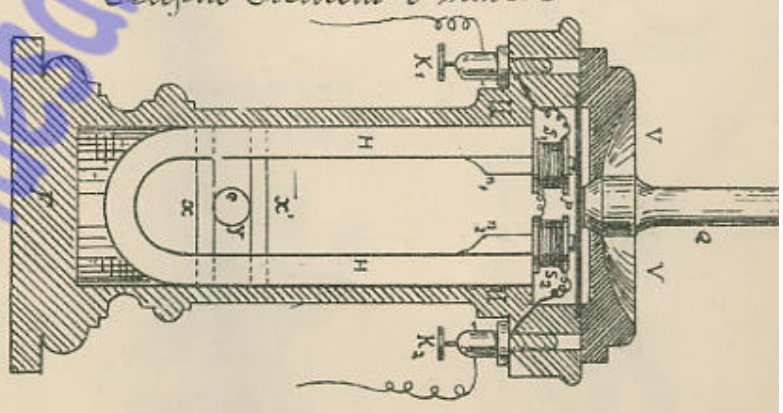




Fig. 55  
Telefono Honey

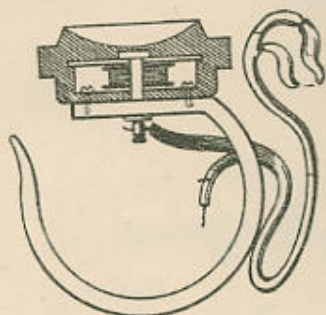
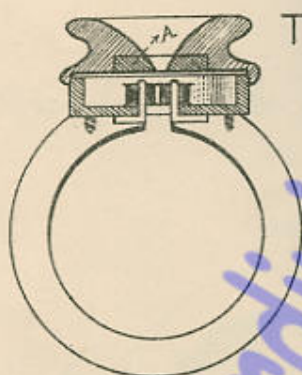
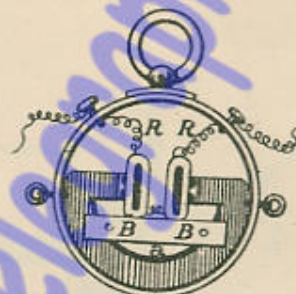
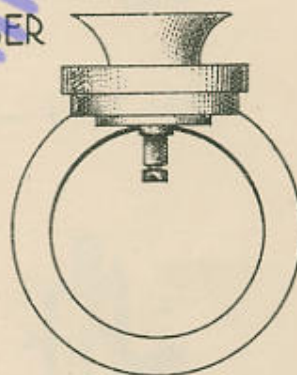


Fig. 56 Tav. VIII.  
Telefono Gower a orologio



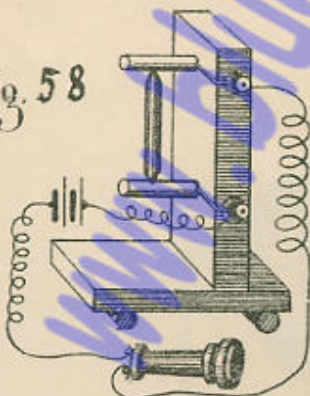
TELEFONO ADER

Fig. 57



MICROFONO HUGHES

Fig. 58



MICROFONO  
EDISON

Fig. 59

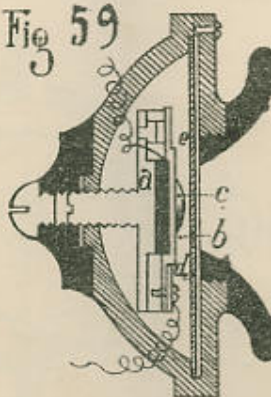


Fig. 60  
Microfono Blak

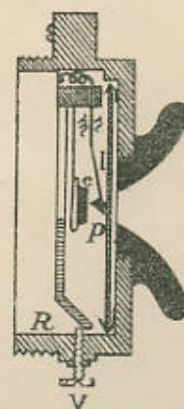




Fig. 61  
Microfono Solid Back

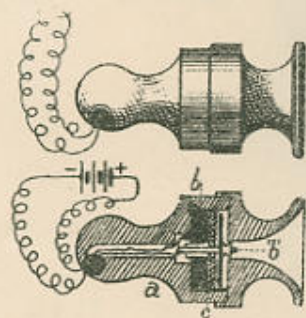


Fig 62  
Microfono Del Ville

Tav. IX.

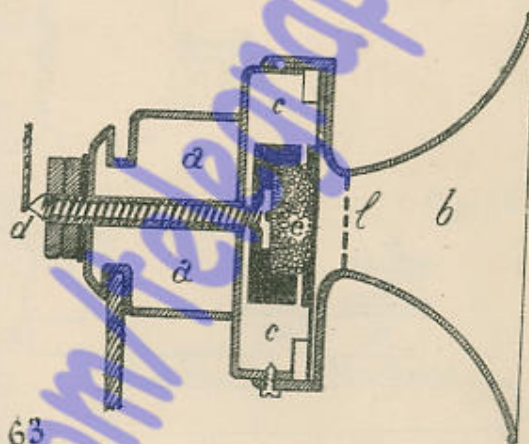


Fig. 63  
Microfono Blake trasformato in Del Ville

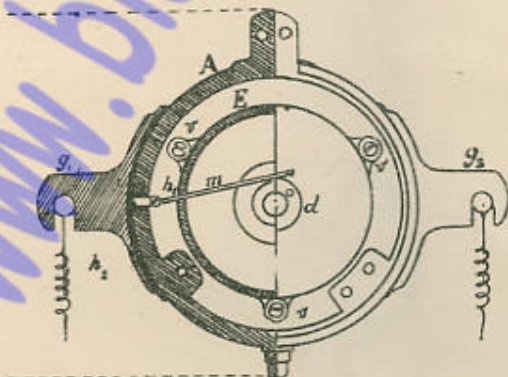
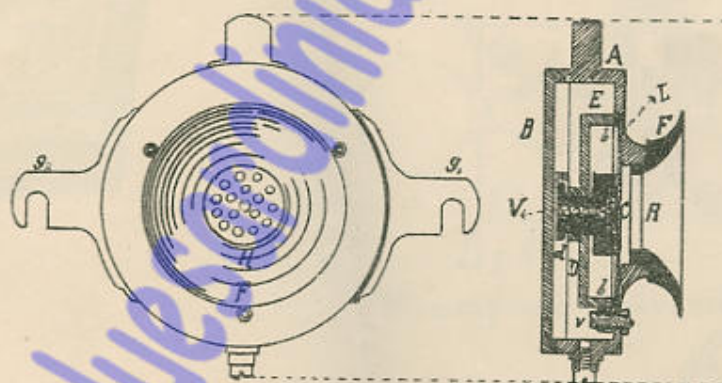


Fig. 64

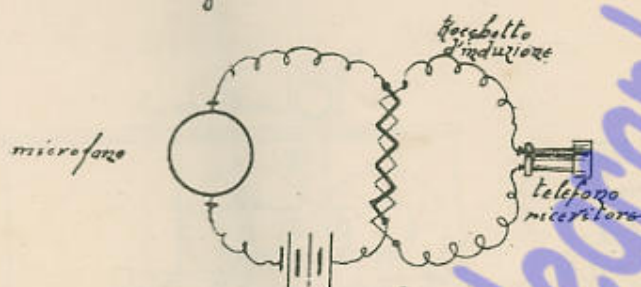


Fig. 65

busto

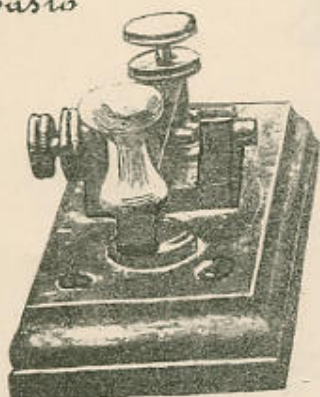


Fig. 66

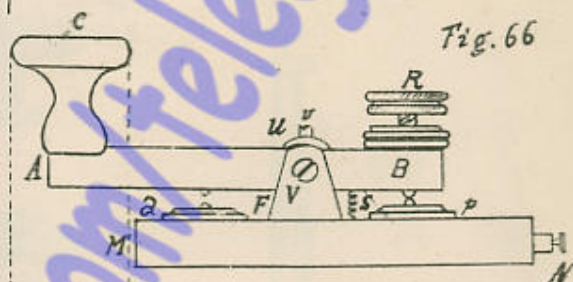


Fig. 68

Macchina scrivente.

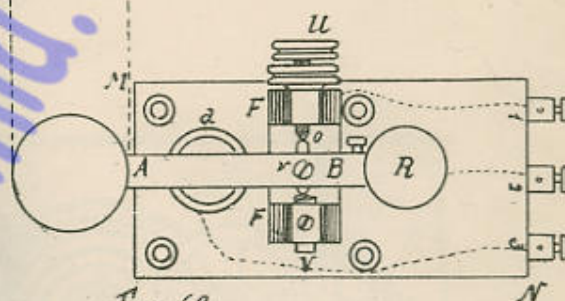


Fig. 67

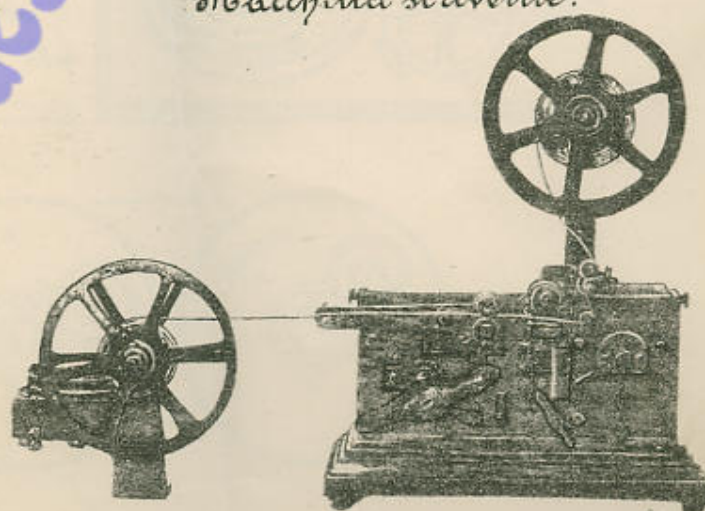
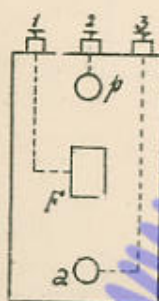


Fig. 69 Apparatto elettromagnetico.

Tav. XI

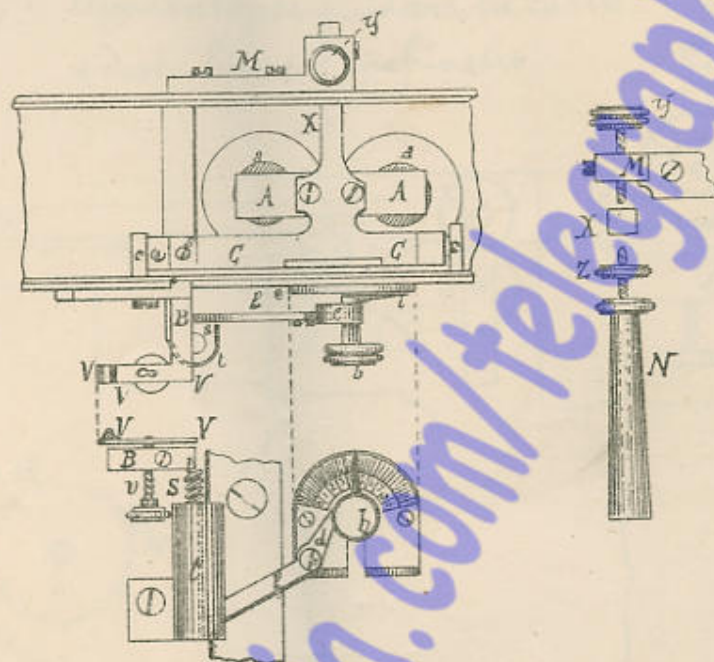


Fig. 70 Motore

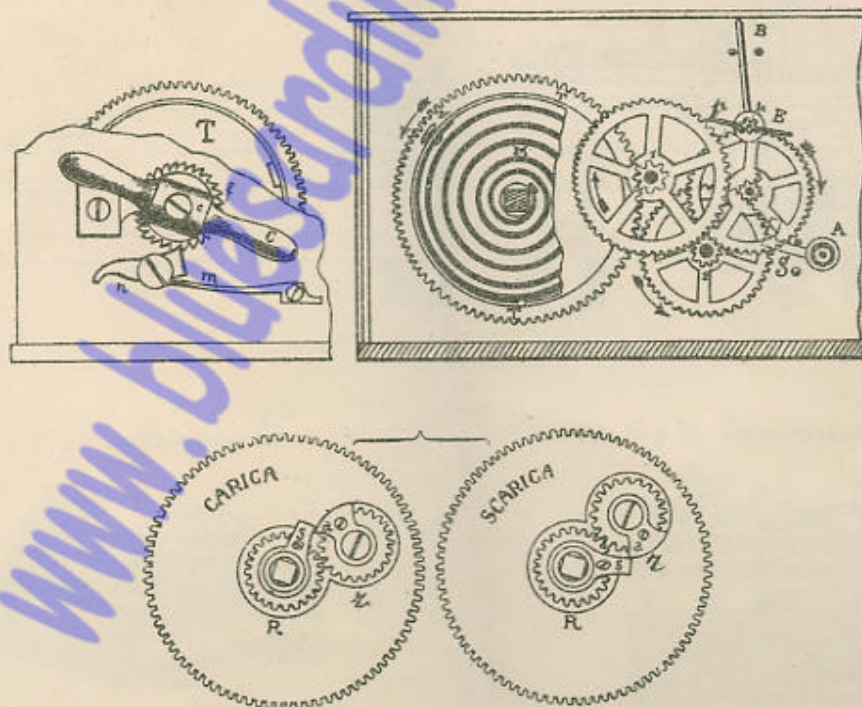




Fig. 71. Appareato per guidare la carta e distribuire l'inchiostro

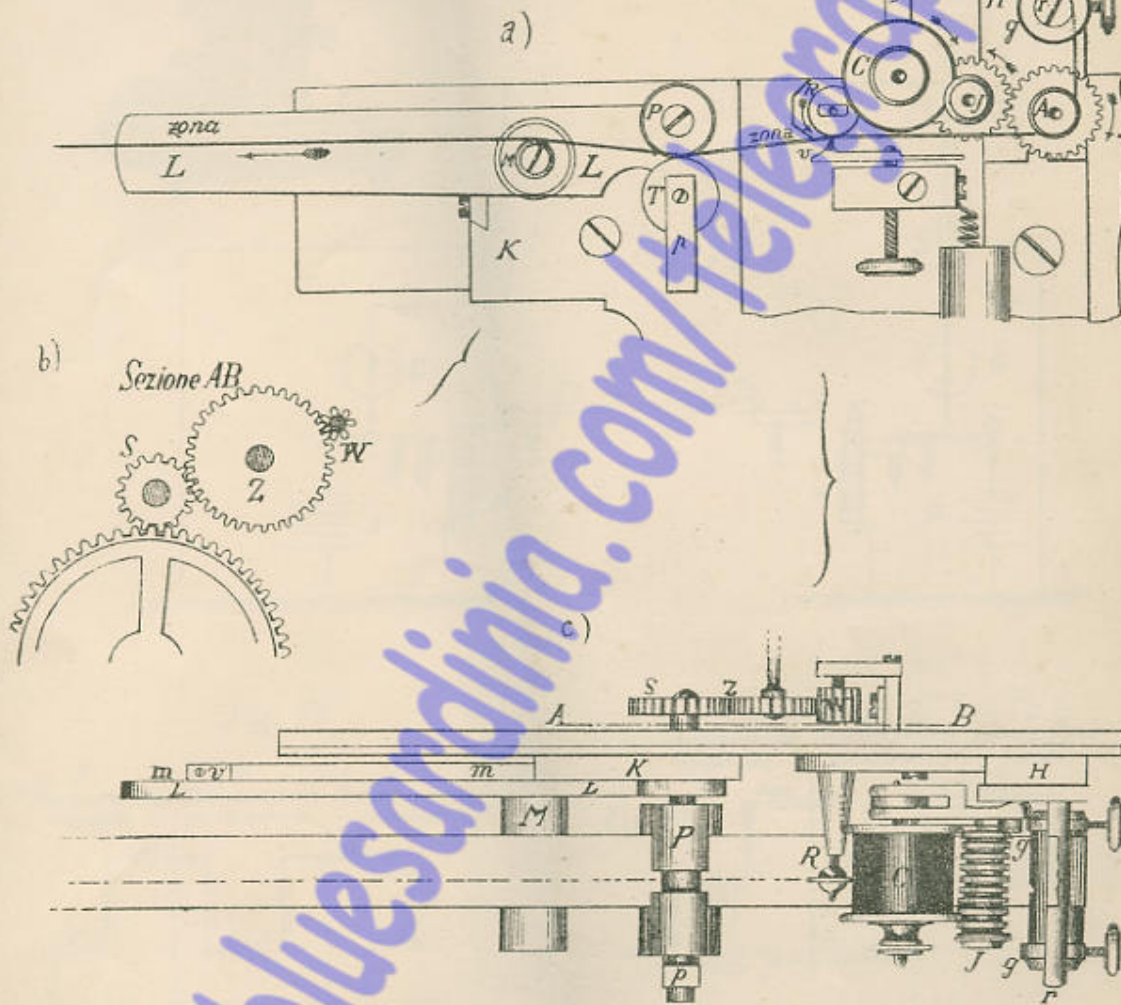


Fig. 72. Bussola



Fig. 73. Commutatore

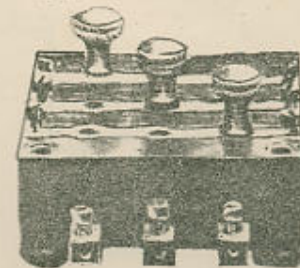
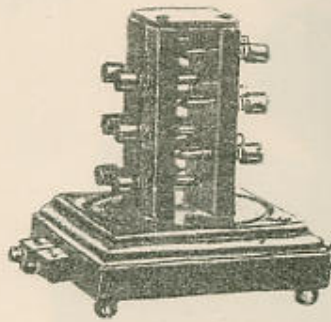


Fig. 74  
Suaricatore



Tab. XIII

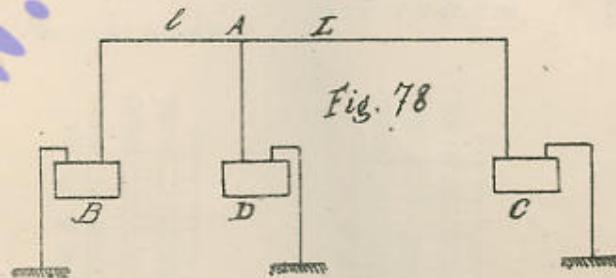
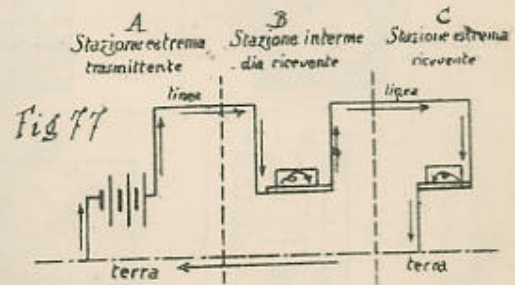
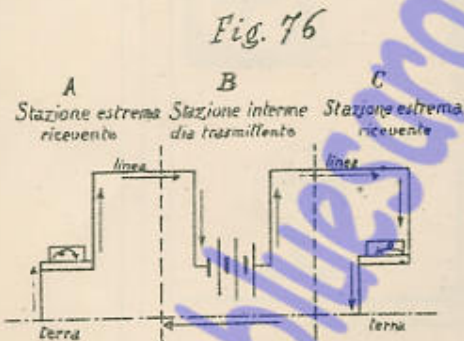
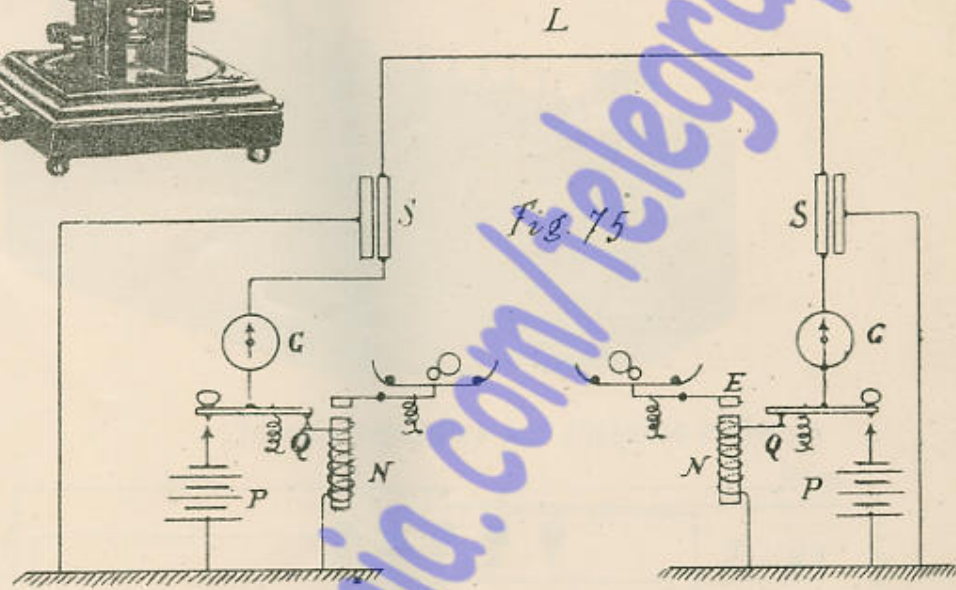
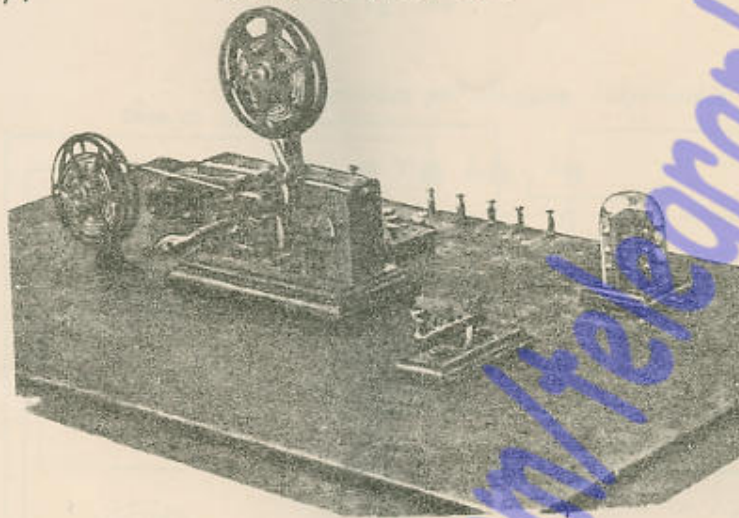




Fig. 79

Tavolo Morse

Tab. XIV



Tavolo semplice per stazione estrema

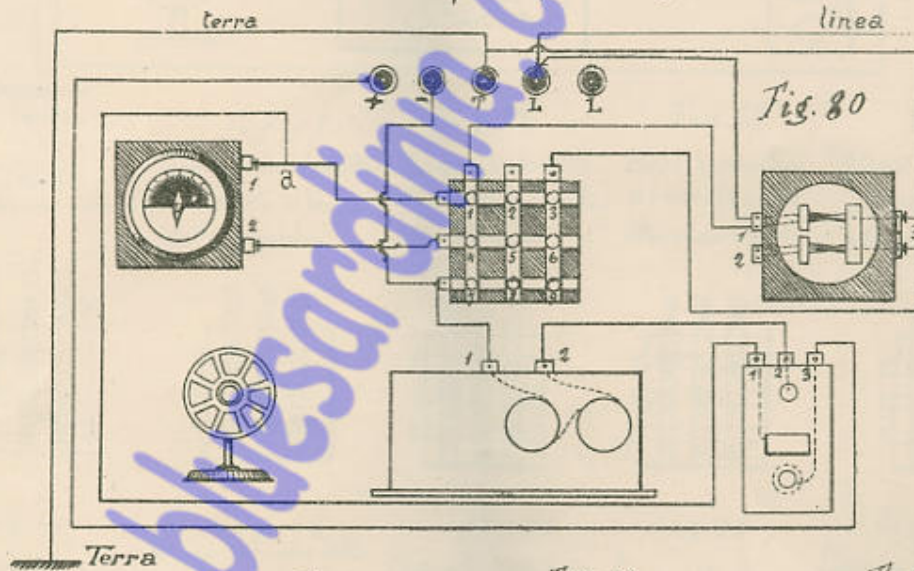


Fig. 81

Bussola esclusa



Fig. 82  
Bussola inclusa

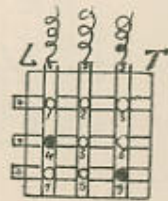


Fig. 83  
Linea a terra

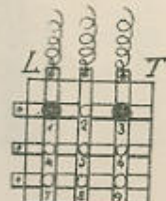


Fig. 84  
Circuito interno al galvanometro

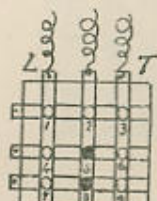




Fig. 85

Tab. XV

Tavolo semplice per stazione intermedia

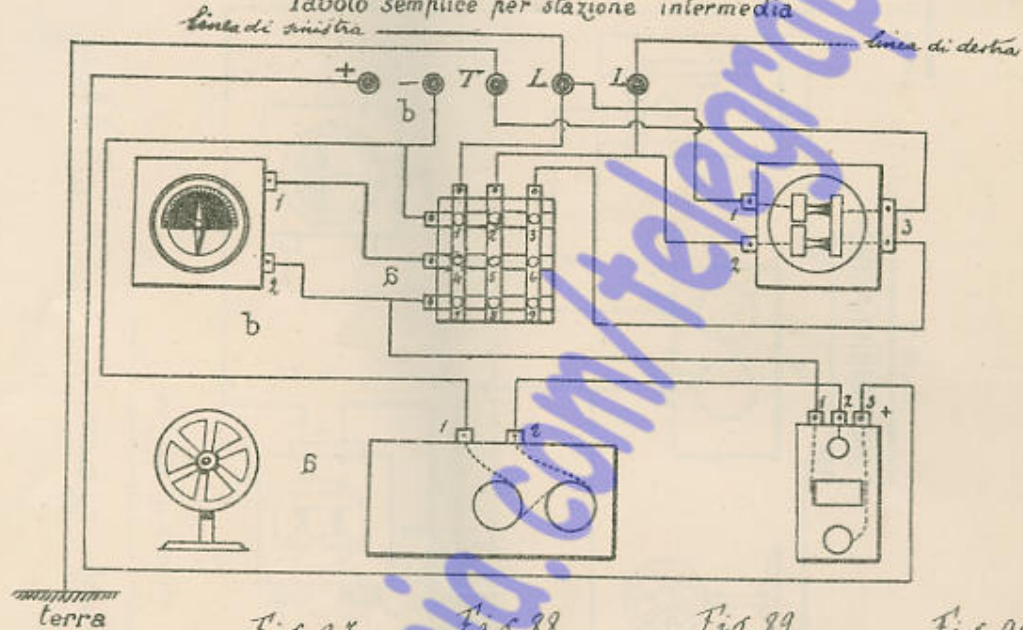


Fig. 86  
Commutazioni normali

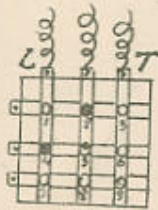


Fig. 87  
Linea di sinistra alla  
macchina, di destra  
alla bussola



Fig. 88  
Linea di destra alla  
macchina, di sinistra  
alla bussola

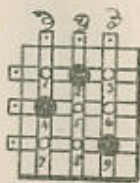


Fig. 89  
Linea di sinistra  
a terra, di destra  
alla macchina



Fig. 90  
Linea di destra  
a terra, di sinistra  
alla macchina

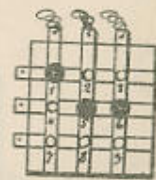


Fig. 91  
Stazione  
esclusa



Fig. 92  
Congiunzioni delle  
linee, bussola  
inclusa



Fig. 93  
Circuito interno  
alla bussola



Fig. 94  
Linee alla terra

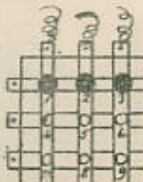


Fig. 95  
Linee in derivazione



Tavolo con due gruppi Morse

Fig 97

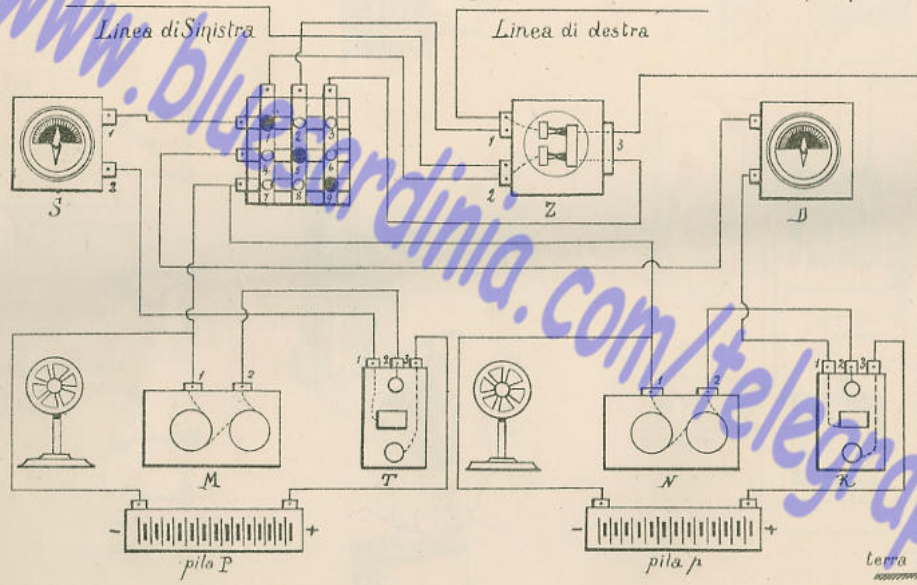


Fig. 96 - Cavoio semplice per stazione intermedia - Trax. XVII

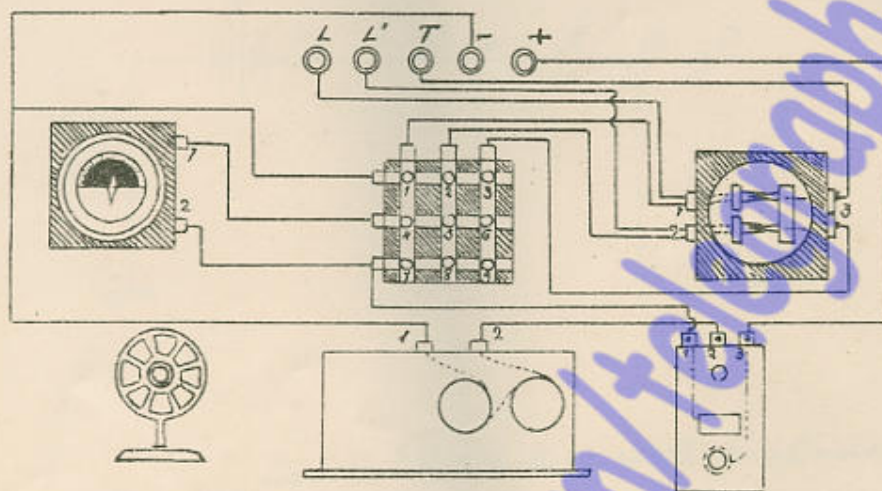
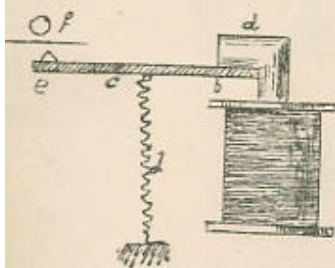


Fig. 98



Gasto Forcieri Fig. 100

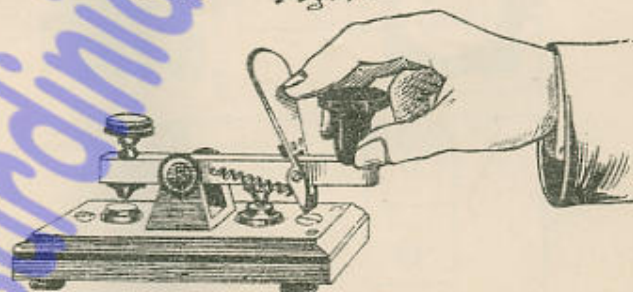


Fig. 99

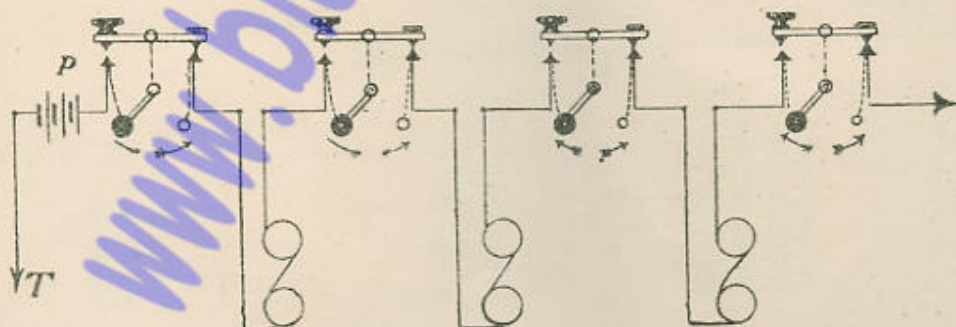




Fig. 101

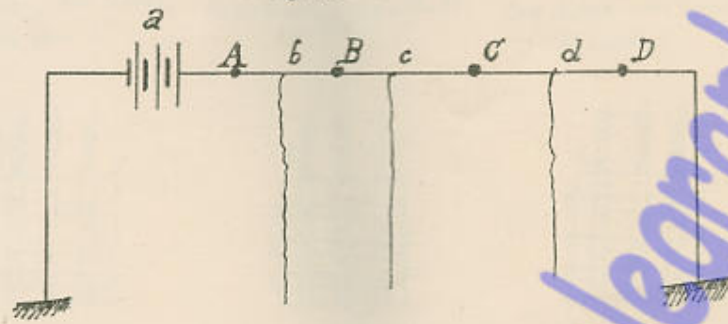


Fig. 102 *Carolo Morse a corrente continua*

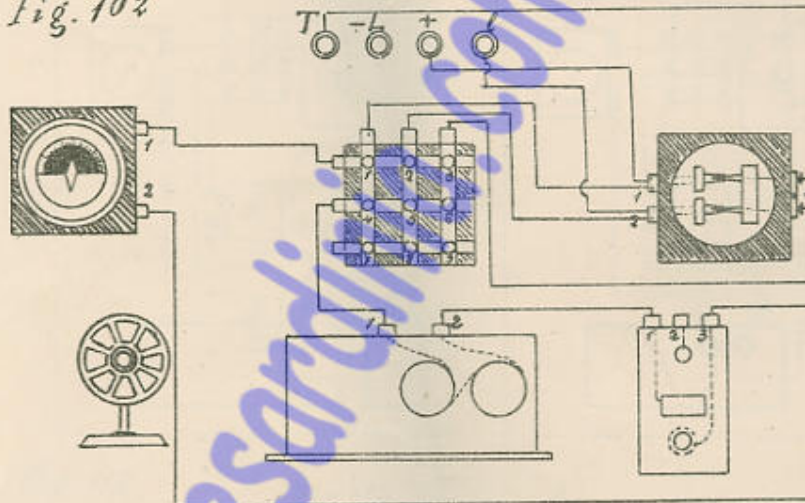


Fig. 103  
*Commutazioni normali*



Fig. 104  
*Linee invertite*

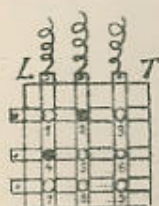


Fig. 105  
*Linee dirette*

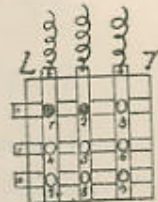


Fig. 106  
*Linea di destra a terra  
capolinea con L*

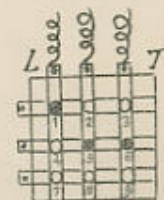


Fig. 107  
Linea di sinistra a terra;  
Capolinea con L

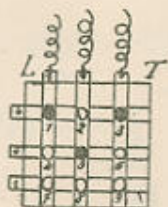


Fig. 108  
Linea di destra isolata;  
Capolinea con quella di sinistra

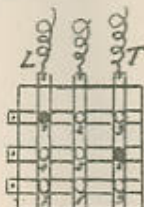


Fig. 109  
Linea di sinistra isolata;  
Capolinea con quella di destra



Tab. XIX  
Fig. 110  
Linea alla terra

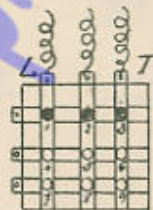


Fig. 111. Ufficio intermedio con pila comune a più circuiti -

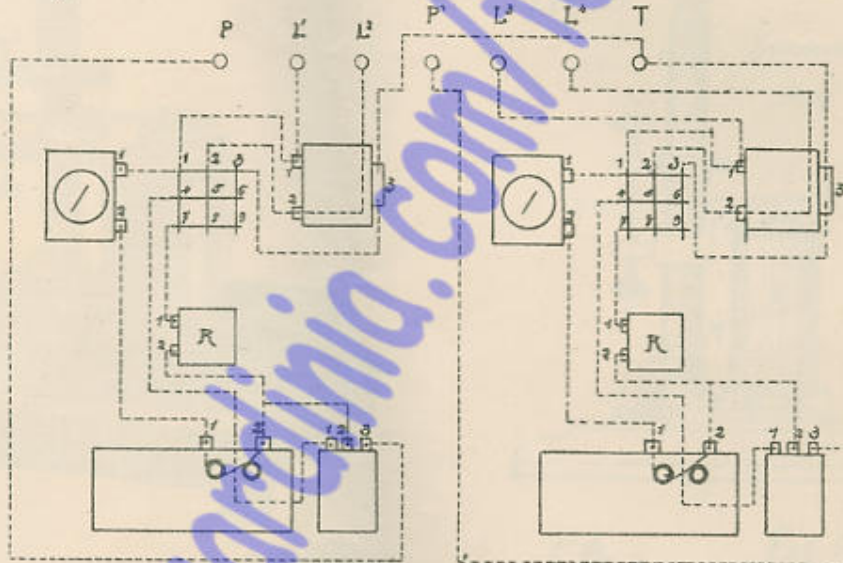


Fig. 112

Commutazione normale



Fig. 113

Capolinea con L<sup>1</sup> o L<sup>3</sup>;  
Linea L<sup>2</sup> o L<sup>4</sup> isolata



Fig. 114

Capolinea con L<sup>1</sup> o L<sup>3</sup>;  
Linea L<sup>2</sup> o L<sup>4</sup> a terra



Fig. 115

Capolinea con L<sup>2</sup> o L<sup>4</sup>;  
Linea L<sup>1</sup> o L<sup>3</sup> isolata



Fig. 116

Capolinea con L<sup>2</sup> o L<sup>4</sup>;  
Linea L<sup>1</sup> o L<sup>3</sup> a terra



Fig. 117

Linea diretta





Fig. 118

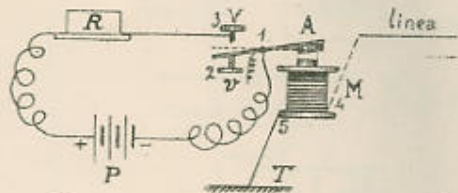
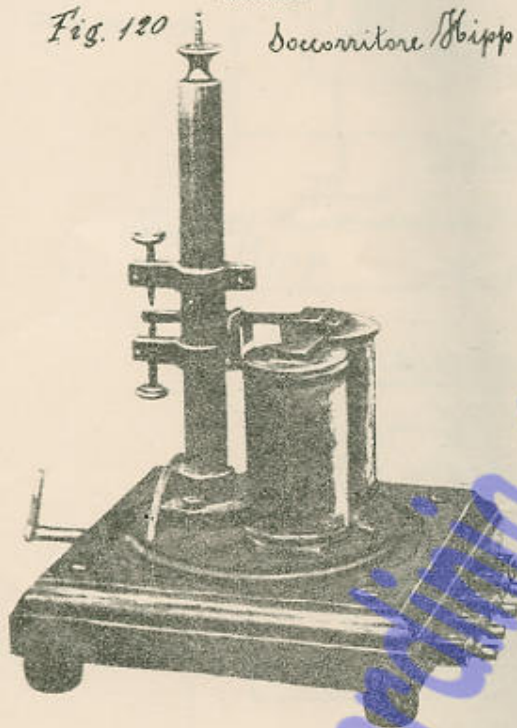


Fig. 120

Soccorritore Hipp



Tab. XX  
Fig. 119

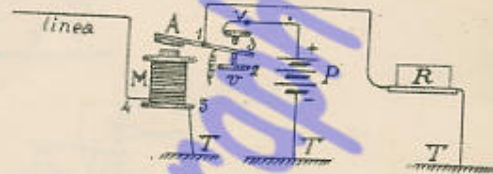


Fig. 121

Soccorritore Hipp

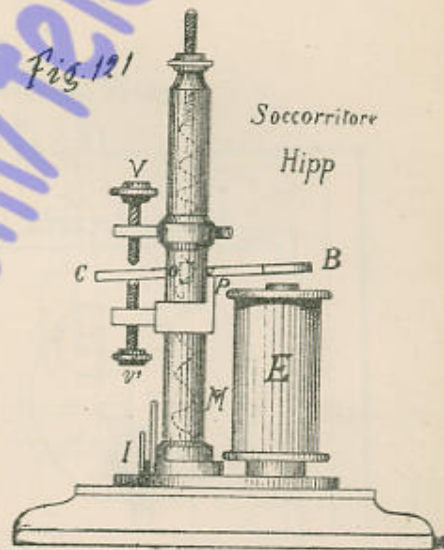


Fig. 122

Soccorritore polarizzato Siemens

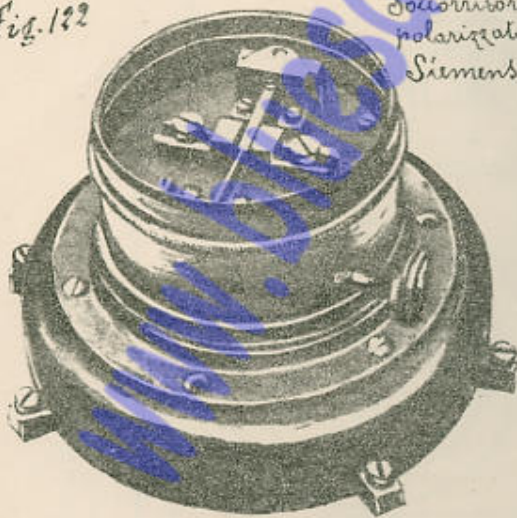
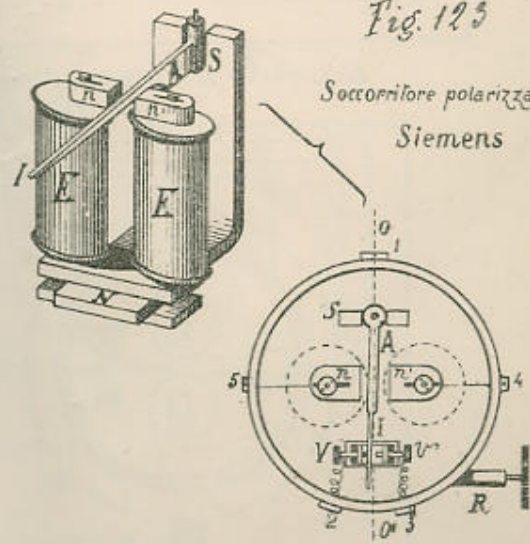


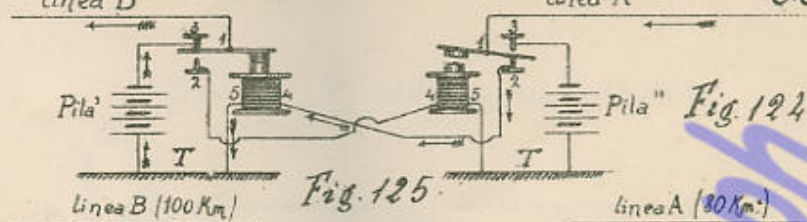
Fig. 123

Soccorritore polarizzato Siemens





Trasmissione fra due linee. (con due pile) Cav. XXI  
XXII



idem con una pila

Fig. 126 Accoppiamento di due soccorritori Hipp Hipp

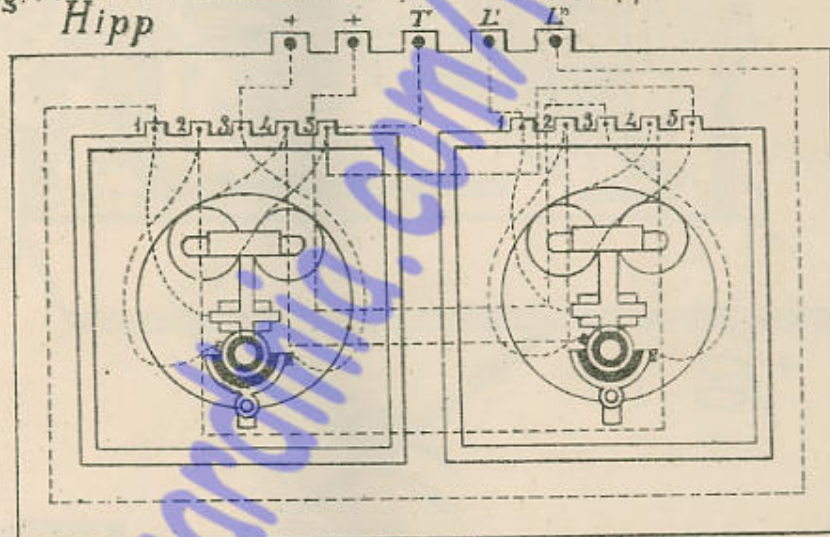


Fig. 127 Accoppiamento di due soccorritori Siemens Siemens

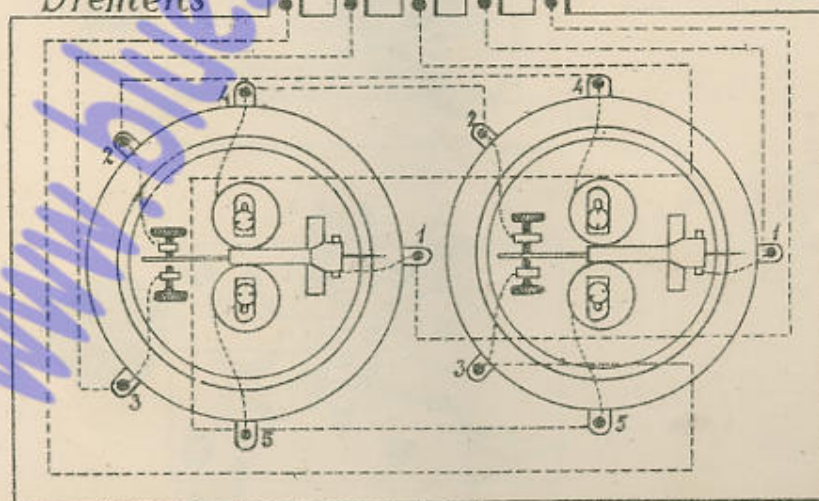


Fig. 128 Cassellina telegrafica

Tab. XXIII

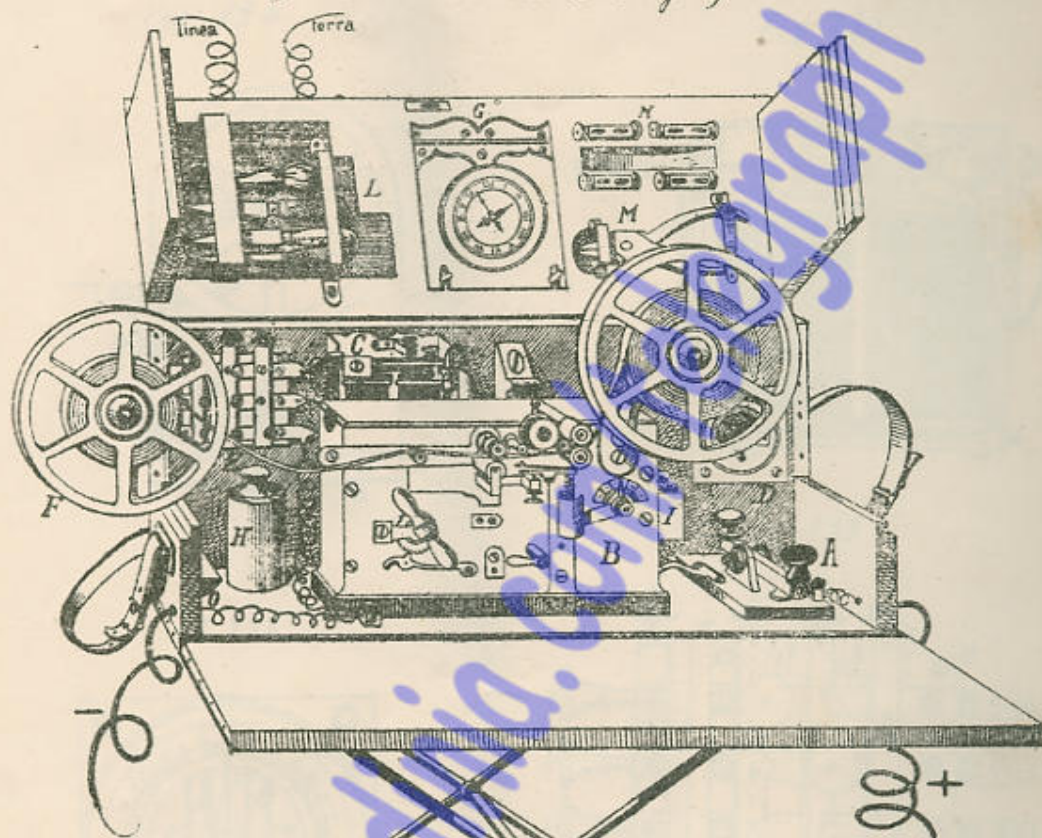
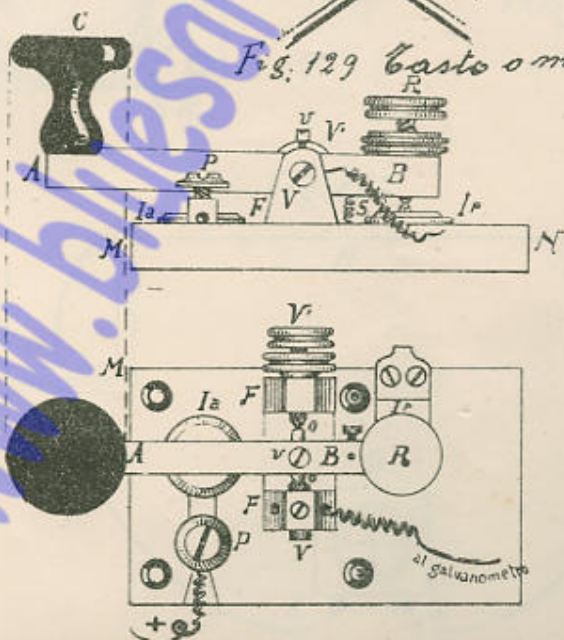


Fig. 129 Basto o manipolatore



20



Fig. 130

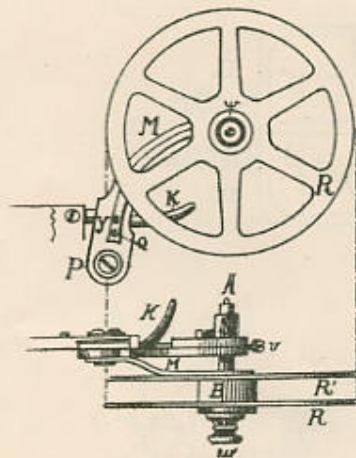


Fig. 131

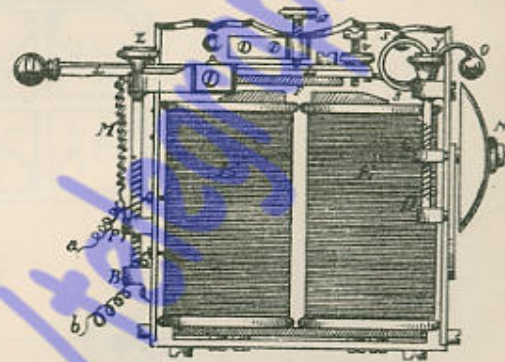


Fig. 133

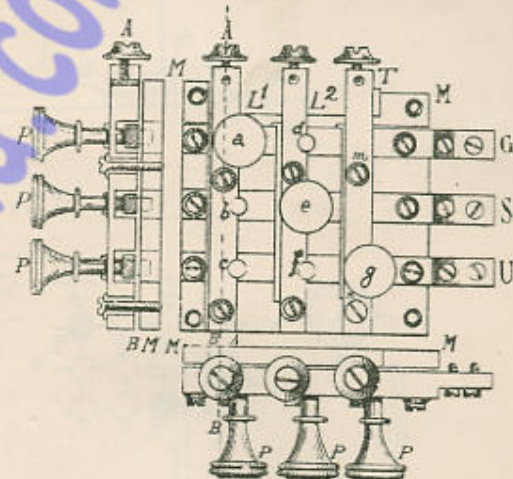


Fig. 132

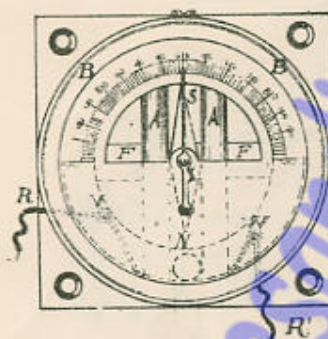


Fig. 134

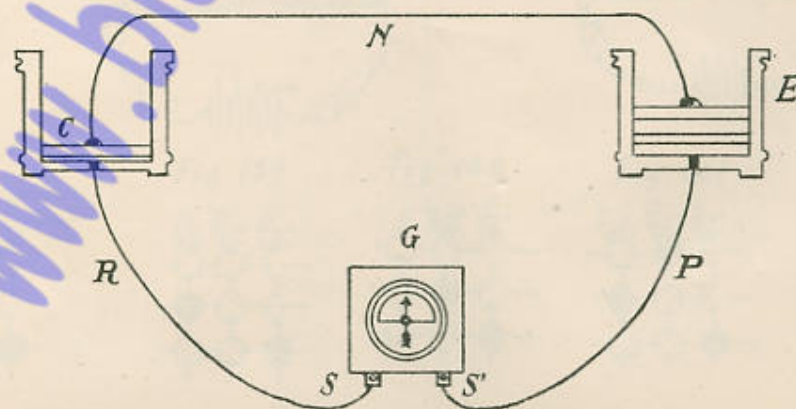




Fig. 135

Tab. XXV

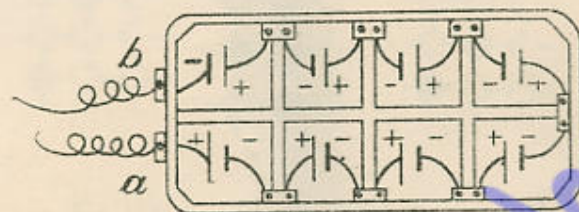


Fig. 136

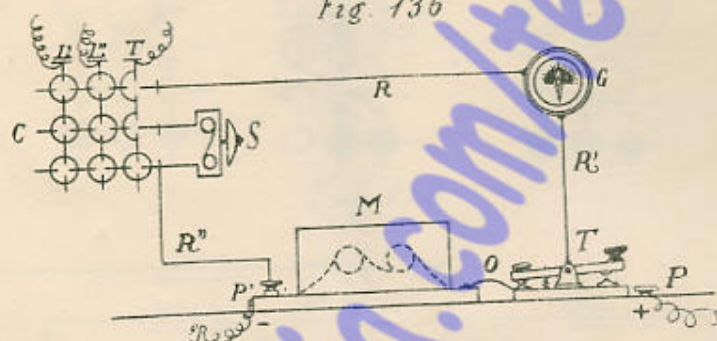


Fig 137

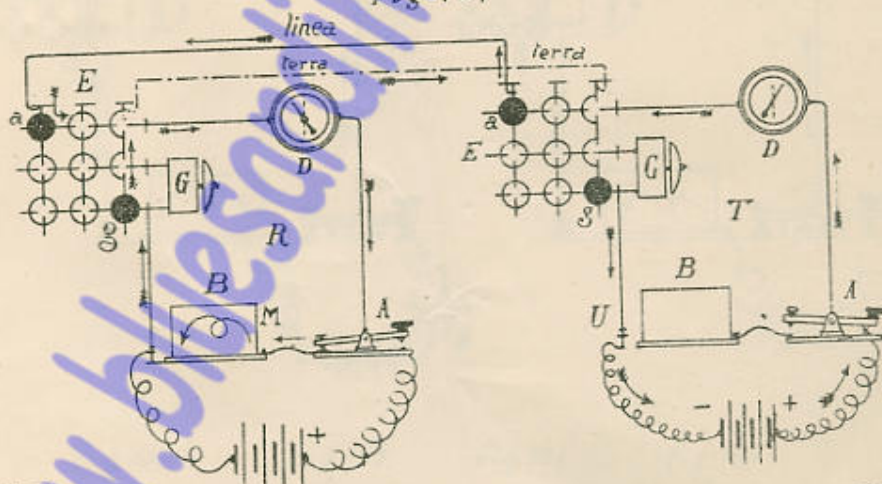


Fig. 138

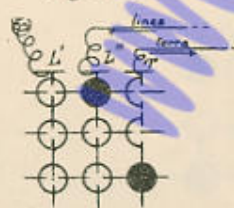


Fig 139

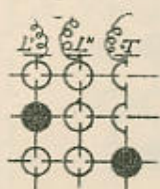


Fig. 140

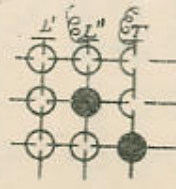


Fig. 141

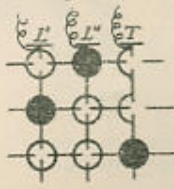


Fig. 142

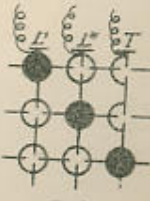


Fig. 143

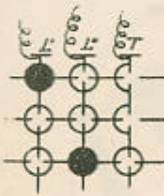


Fig. 144

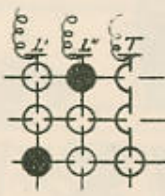


Fig. 145

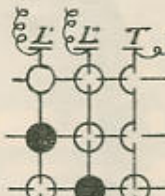


Fig. 146

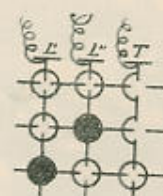


Fig. 147



Fig. 148



Fig. 148<sup>bis</sup>

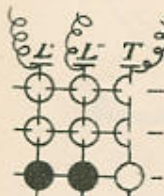


Fig. 149



Fig. 150

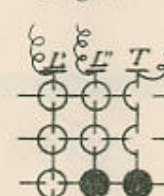


Fig. 151

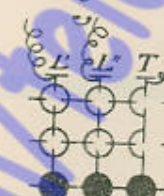


Fig. 152

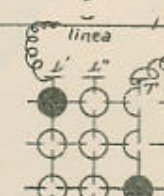


Fig. 153

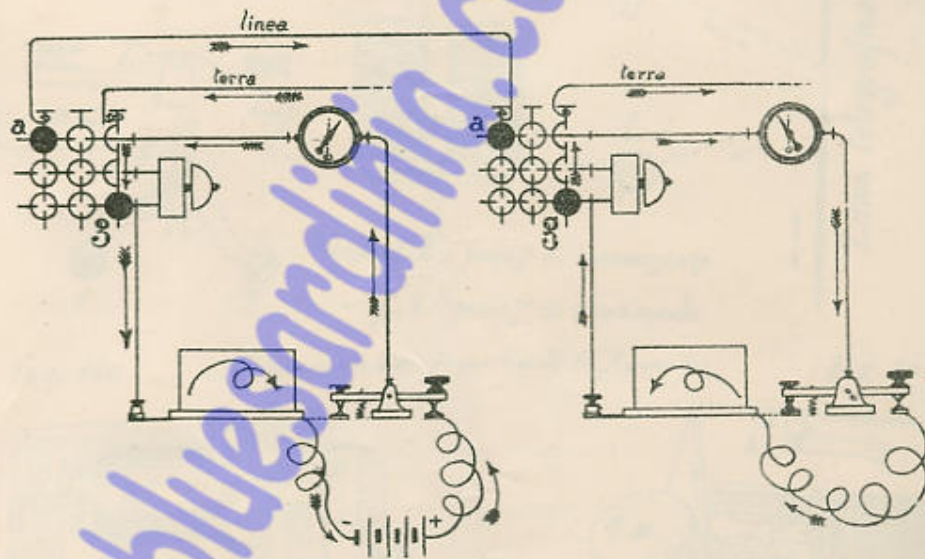


Fig. 154



Fig. 155

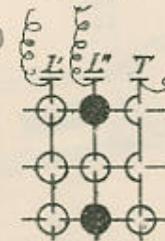


Fig. 156

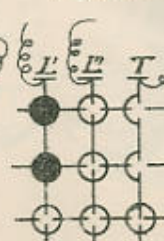


Fig. 157

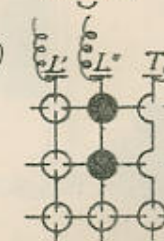
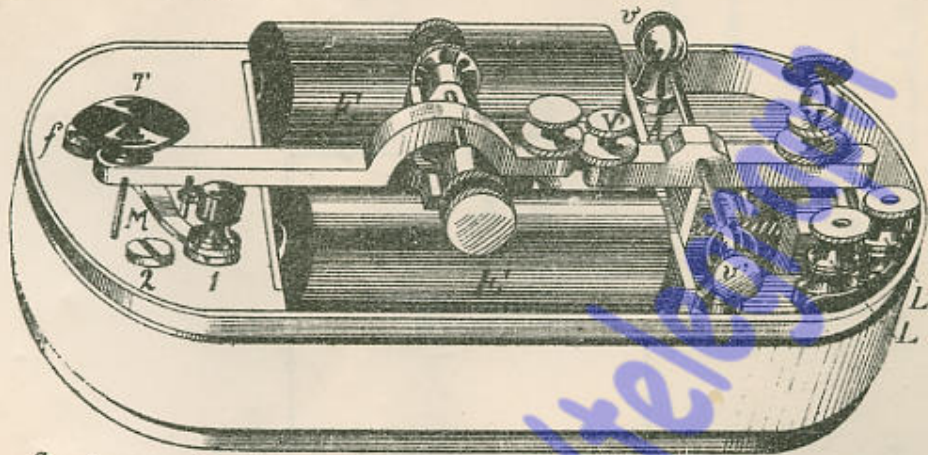




Fig 158 Soudner americano

Tav. XXVII



Grandezza naturale

Fig 159

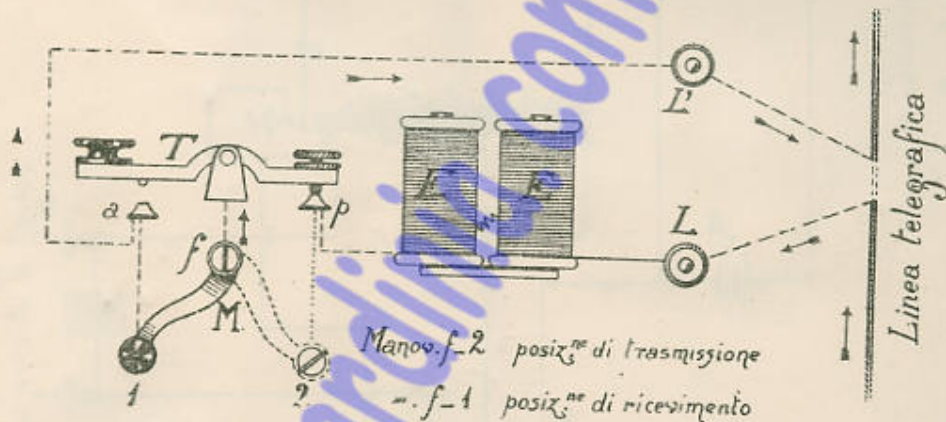


Fig. 160

Apparato microtelefonico

Fig. 161

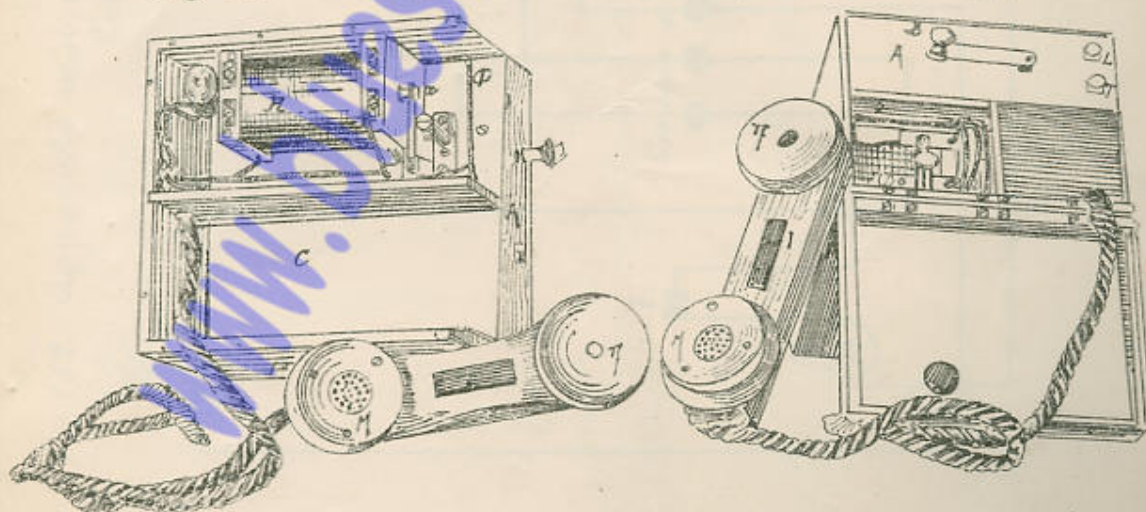




Fig 162 Apparat microtelefonico per cavalleria e ciclisti  
Collegamenti interni

Tav. XXVIII

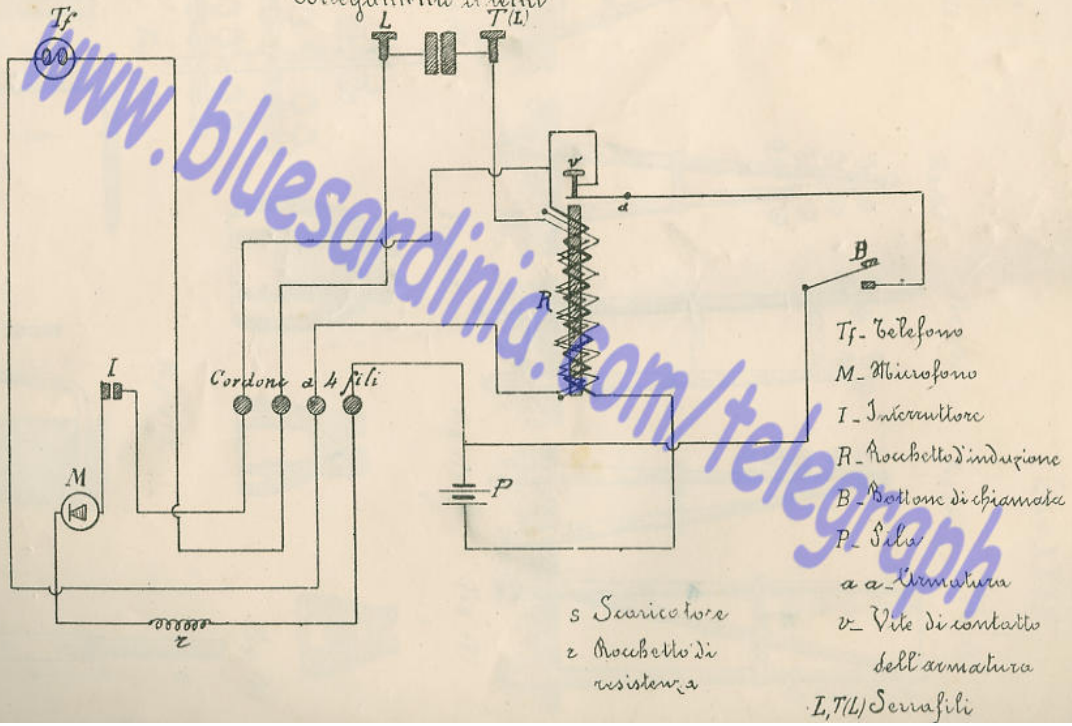


Fig. 163

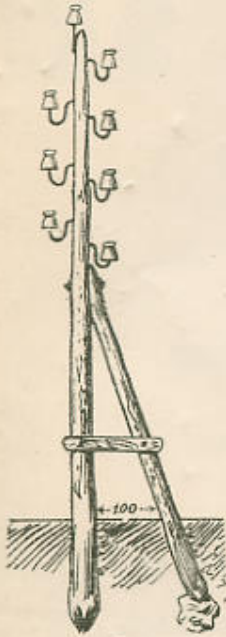


Fig. 164



Fig. 165



Fig. 166



Fig. 167

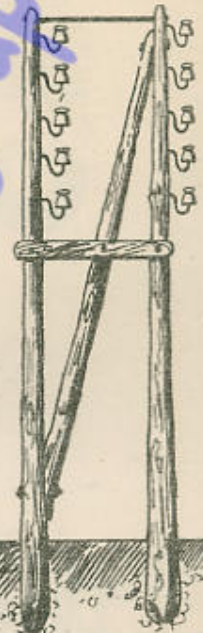


Fig. 168

Fig. 169

Fig. 170

Fig. 171

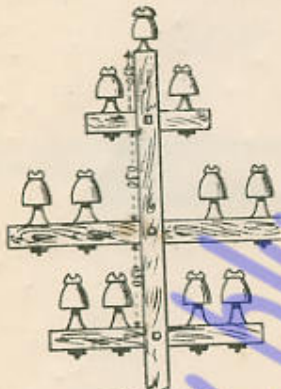


Fig. 172



Fig. 174

Fig. 173

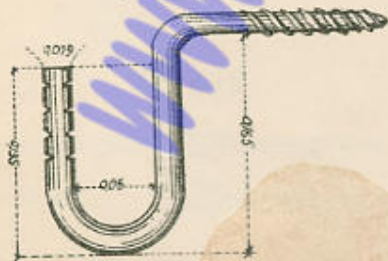
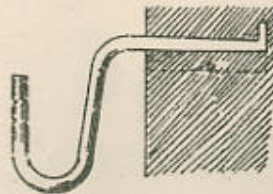


Fig. 175



Fig. 176

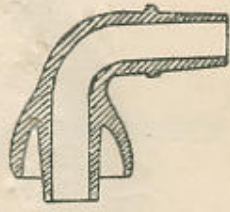


Fig. 177



Fig. 178



Fig. 179



Fig. 180



Fig. 181



Fig. 182

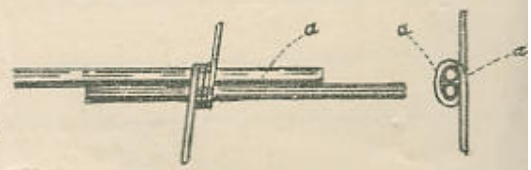


Fig. 183



Fig. 184

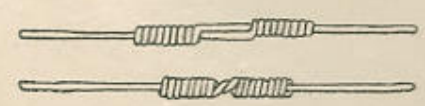


Fig. 185

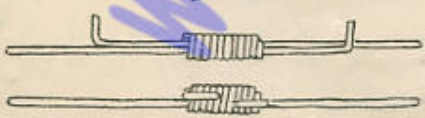
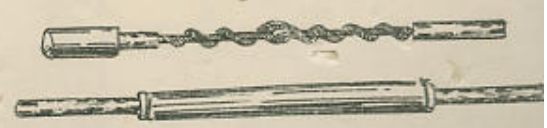


Fig. 186





Tab. XXXI

Fig. 187

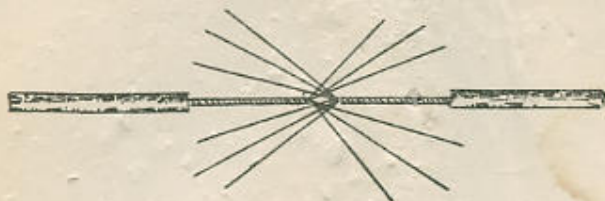


Fig. 188



Fig. 189



Fig. 190



Fig. 191



Fig. 192



Fig. 194

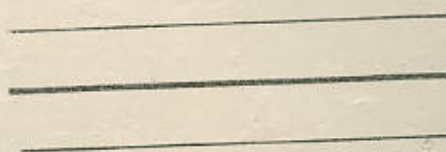


Fig. 193



Fig. 195



Fig. 196

